

HORARIO DE ANPA LESTONNAC 16/17.

ATENCIÓN AO PÚBLICO: MÉRCORES 16.15H-17.15H

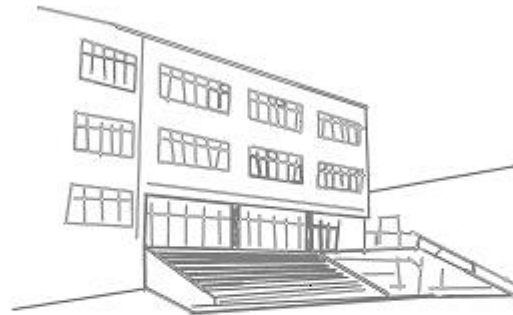
TELÉFONO: 604 005 659

CORREO ELECTRÓNICO: [anpa.lestonnac@gmail.com](mailto:anpa.lestonnac@gmail.com)

FACEBOOK: ANPA LESTONNAC

The logo for ANPA LESTONNAC features a stylized line drawing of a modern building with a glass facade and a set of stairs leading to the entrance. Below the drawing, the text 'ANPA' is written in a large, bold, sans-serif font, with 'LESTONNAC' in a smaller, bold, sans-serif font underneath it. A horizontal line separates the two words.

Na web do cole [www.lestonnacferrol.org](http://www.lestonnacferrol.org) , temos á vosa disposición toda a información necesaria sobre a ANPA.



**ANPA**  

---

**LESTONNAC**